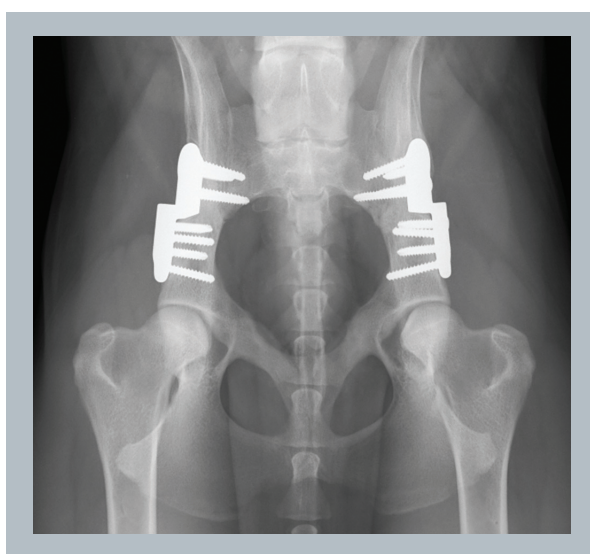


Locking TPO Plate

U.S. Patent No. 7,695,472 B2, 7,905,883 B2



- Locking Triple Pelvic Osteotomy Plate was designed in collaboration with Kenneth A. Bruecker, DVM, MS, DACVS.
- The cranial segment has 4 holes for greater screw purchase.
- The design of the caudal segment allows for the plate to be applied more caudally, avoiding the insertion of the rectus femoris muscle. The shape avoids impingement of the soft tissues and allows for better plate fit to the ilium.
- Each hole can accept a locking screw to improve stability of the osteotomy and minimize the potential for screw pull out. The screw holes can also accept conventional screws.
- Available in 15, 20, 25, 30 and 40 degree options.
- A 2.7mm Ventral Augmentation Plate is also available to augment stability, if necessary.



www.ngdvet.com



Locking Triple Pelvic Osteotomy Plates

Cat #	Description
LTPO15L	Locking TPO 15 degree Left
LTPO15R	Locking TPO 15 degree Right
LTPO20L	Locking TPO 20 degree Left
LTPO20R	Locking TPO 20 degree Right
LTPO25L	Locking TPO 25 degree Left
LTPO25R	Locking TPO 25 degree Right
LTPO30L	Locking TPO 30 degree Left
LTPO30R	Locking TPO 30 degree Right
LTPO40L	Locking TPO 40 degree Left
LTPO40R	Locking TPO 40 degree Right



Locking Self Tapping Screws

Cat #	Description
LSTCBS2.7	2.7 Locking Screws 10mm thru 34mm Lengths
LSTCBS3.5	3.5 Locking Screws 12mm thru 60mm Lengths
LSTCBS4.0	4.0 Locking Screws 20mm thru 50mm Lengths



Locking Drill Guide

Cat #	Description
LDG2.7S	2.7 Locking Drill Guide
LDG3.5S	3.5 Locking Drill Guide
LDG3.2	3.2 Locking Drill Guide (4.0 Locking Screws)



Ventral Augmentation Plates

Cat #	Description
VAP2.7	2.7mm Ventral Augmentation Plate



Acetabular Plate

Cat #	Description
LAP2.7	2.7mm Locking Acetabular Plate



www.ngdvet.com

NEW GENERATION DEVICES

Choice without Compromise

65 Harristown Road
Glen Rock, NJ 07452
U.S. 800-797-8587
International 201-891-5615