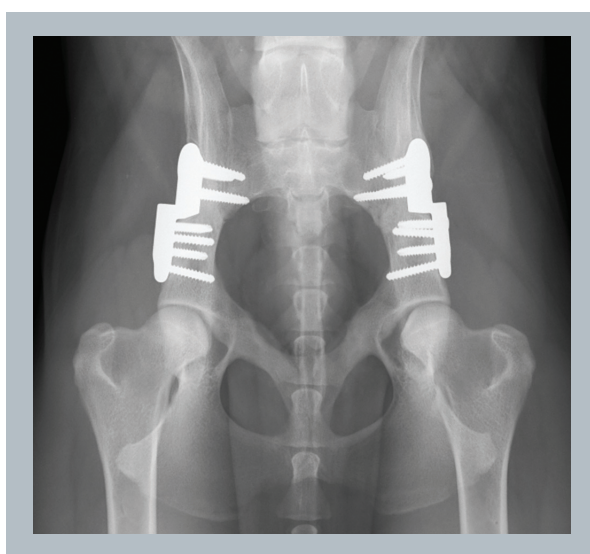


Double Pelvic Osteotomy

Patent Pending



Salient Features

- Very small surgical approach (5 cm)
- Plate flanged for intimate fit and to accommodate curved ilium in growing dogs
- Bilateral
- DPO Less Morbid then TPO
- Greater fixation then TPO
- Plates designed to avoid screw and implant loosening
- Plates have standard and locked holes
- Divergent locking screw holes angled into stronger thicker bone for greater fixation
- Allows a place for further fixation with cerclage wire
- Developed in collaboration with Aldo Vezzoni Med. Vet. S.C.M.P.A. Dipl ECVS



www.ngdvet.com



Locking Double Pelvic Osteotomy Plates

Cat #	Description
DPO25L	Locking DPO 25 degree Left
DPO25R	Locking DPO 25 degree Right
DPO30L	Locking DPO 30 degree Left
DPO30R	Locking DPO 30 degree Right



Locking Self Tapping Screws

Cat #	Description
LSTCBS2.7	2.7 Locking Screws 10mm thru 34mm Lengths
LSTCBS3.5	3.5 Locking Screws 12mm thru 60mm Lengths
LSTCBS4.0	4.0 Locking Screws 20mm thru 50mm Lengths



Locking Drill Guide

Cat #	Description
LDG2.7S	2.7 Locking Drill Guide
LDG3.5S	3.5 Locking Drill Guide
LDG3.2	3.2 Locking Drill Guide (4.0 Locking Screws)



Ventral Augmentation Plates

Cat #	Description
VAP2.7	2.7mm Ventral Augmentation Plate



Acetabular Plate

Cat #	Description
LAP2.7	2.7mm Locking Acetabular Plate



www.ngdvet.com

NEW GENERATION DEVICES

Choice without Compromise

65 Harristown Road
Glen Rock, NJ 07452
U.S. 800-797-8587
International 201-891-5615